



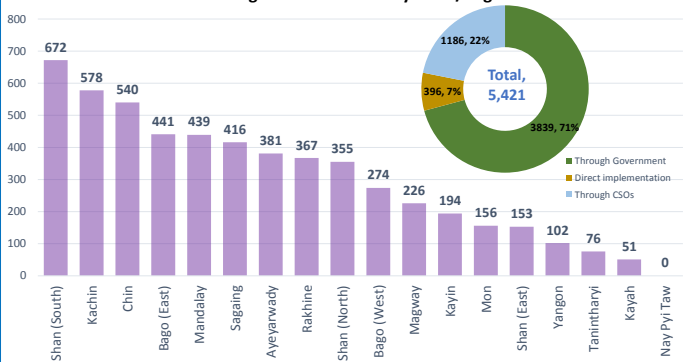
HIGHLIGHTS

UNICEF Myanmar is responding to the COVID-19 pandemic together with the Ministry of Health and Sports, Ministry of Agriculture, Livestock and Irrigation and Ministry of Education. UNICEF together with the Government Departments and Implementing Partners have reached

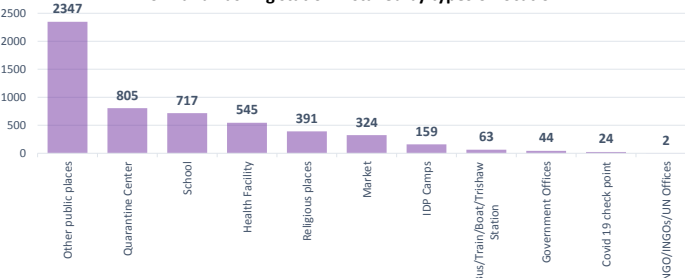
- 2,957,080 people across 211 townships reached with critical WASH services (5,421 Handwashing Stations, Posters, Soaps and other WASH supply)
- 1,452,300 people across 14 States/Regions and Nay Pyi Taw reached on COVID-19 through messaging on prevention and access to services through Department of Rural Development and Department of Public Health
- 23,475 people across 18 townships of 14 States/Regions reached with critical WASH supplies (6,000 Hygiene kits & 32,733 Soaps) through government departments and CSOs
- UNICEF together with the Ministry of Health and Sports, Ministry of Education and WHO have drafted School Guideline on COVID Prevention which includes minimum requirements for WASH in schools to be well prepared for schools reopening in July 2020

Hand Washing Station Installation

of Handwashing Station installed by State/Region



of Handwashing station installed by types of location

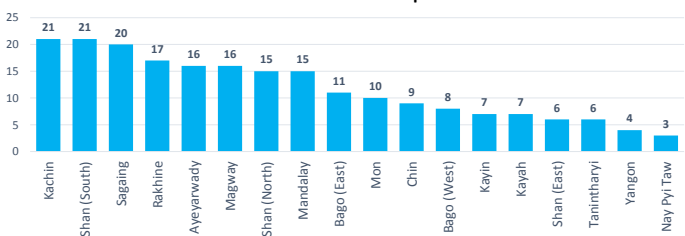


WASH Intervention for COVID-19 Response

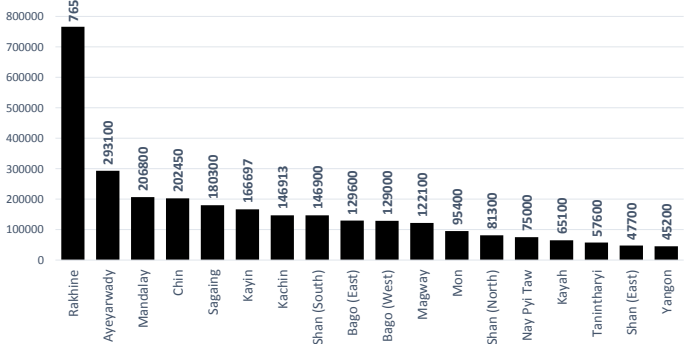
State/Region	Hygiene Kits #	Soap #	Water Containers #	Water Treatment #	Risk Communication and Community Engagement
Mon	1,000	-	-	-	1,200
Chin	-	488	-	-	1,889
Kachin	-	13,569	-	-	600
Kayah	-	-	-	-	1,100
Kayin	4,700	-	-	-	75
Magway	-	-	-	-	1,600
Mandalay	-	-	-	-	2,400
Rakhine	300	15,106	312	23	3,159
Sagaing	-	-	-	-	2,000
Tanintharyi	-	-	-	-	1,000
Yangon	-	-	-	-	700
Shan (North)	-	150	-	-	400
Shan (South)	-	2,820	-	-	900
Shan (East)	-	600	-	-	400
Ayeyarwady	-	-	-	-	5,100
Bago (East)	-	-	-	-	1,242
Bago (West)	-	-	-	-	1,658
Nay Pyi Taw	-	-	-	-	1,500
Grand Total	6,000	32,733	312	98	29,048

WASH Coverage and Beneficiaries Reached

WASH covered & Handwashing station installed
Total - 212 Townships



Total estimated beneficiaries for all WASH services



Handover of critical WASH services to Kachin State Health Department (SHD) for quarantine centers in remote places along Myanmar - China border of Putao and Myitkyna Townships @ UNICEF/2020/Sanda Lwin